

X10DR®

LIBERATE YOUR MOBILE RADIO

Gateway Audio Level Adjustment Tool. Installation And Operation Guide

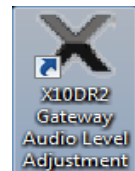
Recommended Platform: Windows 7, Windows 10

Introduction:

The X10DR2 Gateway Audio-Level Adjustment Tool is used to adjust the input/output gains while the Gateway is operational. This saves significant time when determining the correct levels for different applications, or when setting up the X10DR for new radio types.

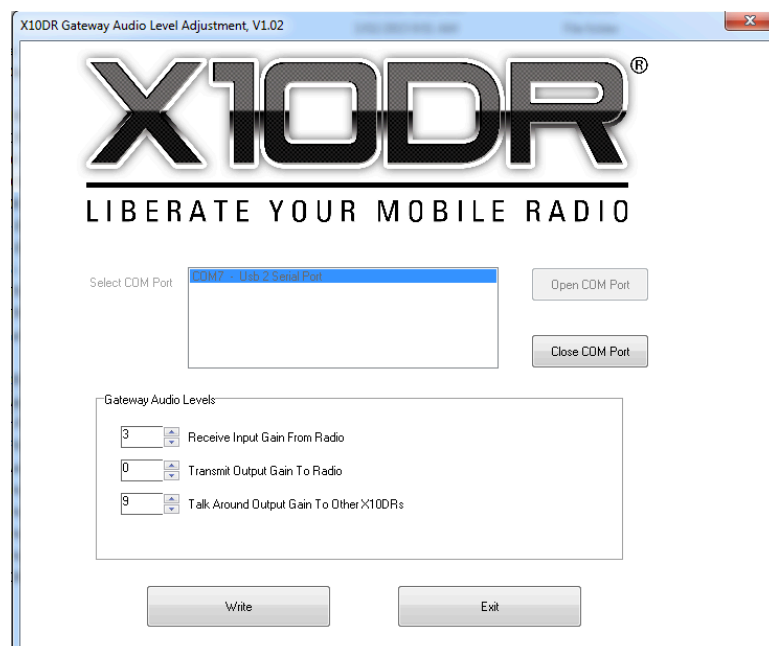
The installer loads appropriate driver software for the Gateway, and then installs the Adjustment-Tool software.

The installed software is accessible via a desktop shortcut:



It is also accessible via the Windows Start-Menu under:

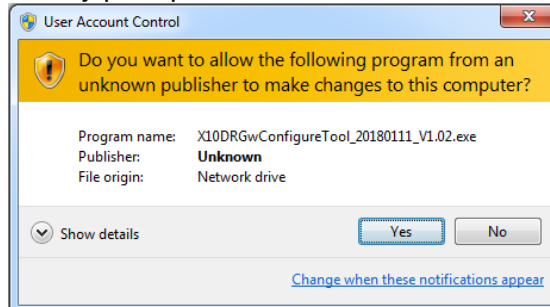
Start > Wireless Pacific > X10DR Gateway Audio Level Adjustment.



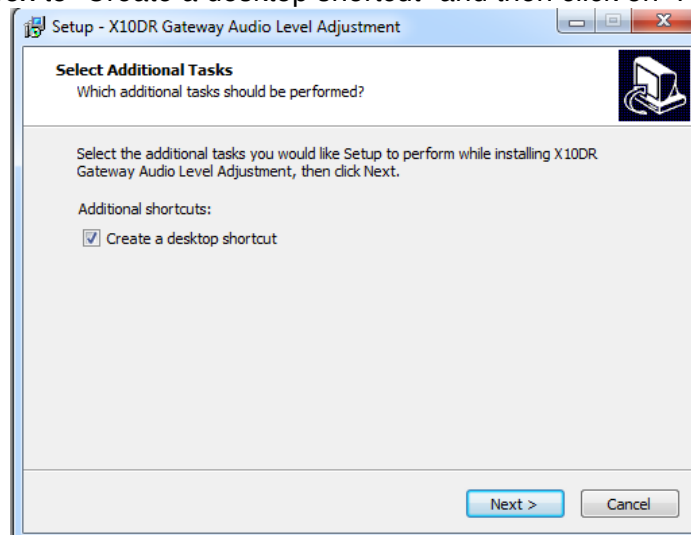
1. INSTALLATION:

Save the installer setup file to a temporary location and run it.
(Typical filename = X10DRGwConfigureTool.....VX.xx.EXE)

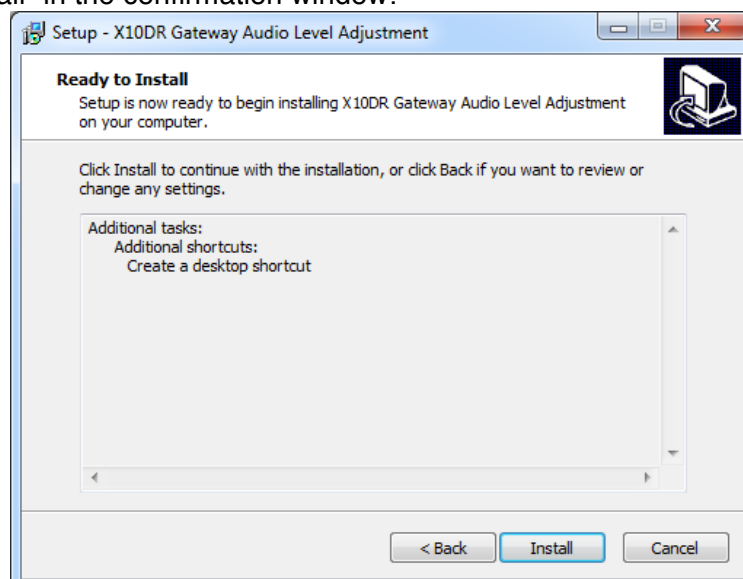
Answer “Yes” to the security prompt:



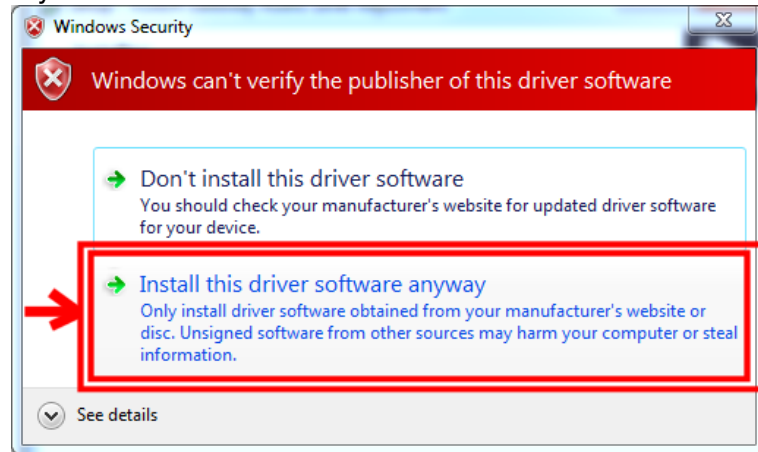
Tick the checkbox to “Create a desktop shortcut” and then click on “Next”:



Click on “Install” in the confirmation window:



A Windows Security warning will pop up. Click on the box to “Install this driver software anyway”:



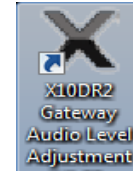
After the installation is complete, click on the “Finish” button to close the window. The installation is now complete:



2. OPERATION:

PREPARATION:

To start the program, click on the desktop shortcut:



...or start it via the Windows Start-Menu under:

Start > Wireless Pacific > X10DR Gateway Audio Level Adjustment.

The program will show:



Click "OK" to clear the temporary message.

Connect the Gateway Programming-Lead to a PC USB Port.



This is a standard Micro-B USB cable supplied with the X10DR Programming kit (PN: XFPK).

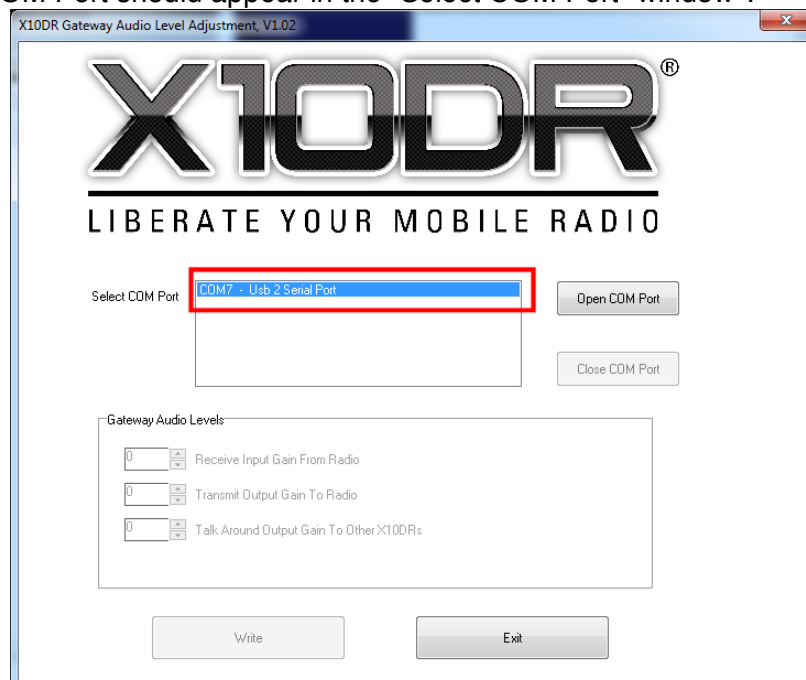
Connect the micro-B USB end of the cable to the connector on the base of the Gateway.

Note: The Gateway should be in normal operational mode : i.e. connected to the RADIO and antenna, and the system should be powered up and paired + connected to a Handset.



WHITE micro-B USB cable shown above – for clarity.

The new COM Port should appear in the “Select COM Port” window*:



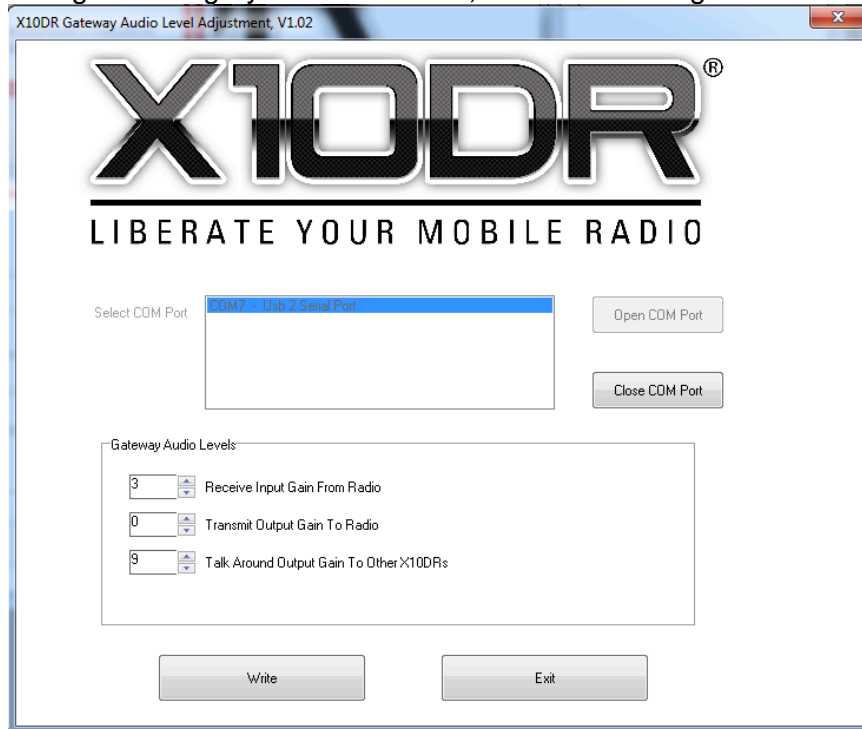
The system is now ready for operation.

* = If the COM Port fails to show up, see the Troubleshooting section at end of this document.

Important : Use the Programmer to check the GW Firmware version is V1.83 or later. (The FW version is displayed when the GW configuration is READ.)

Adjusting Levels :

1. Ensure the correct COM Port is selected (if there are multiple COM ports in the selection window), and then click on the “Open COM Port” button. This will READ the current parameters from the Gateway. The Adjustment boxes will change from a greyed-out condition, to a normal foreground text format.

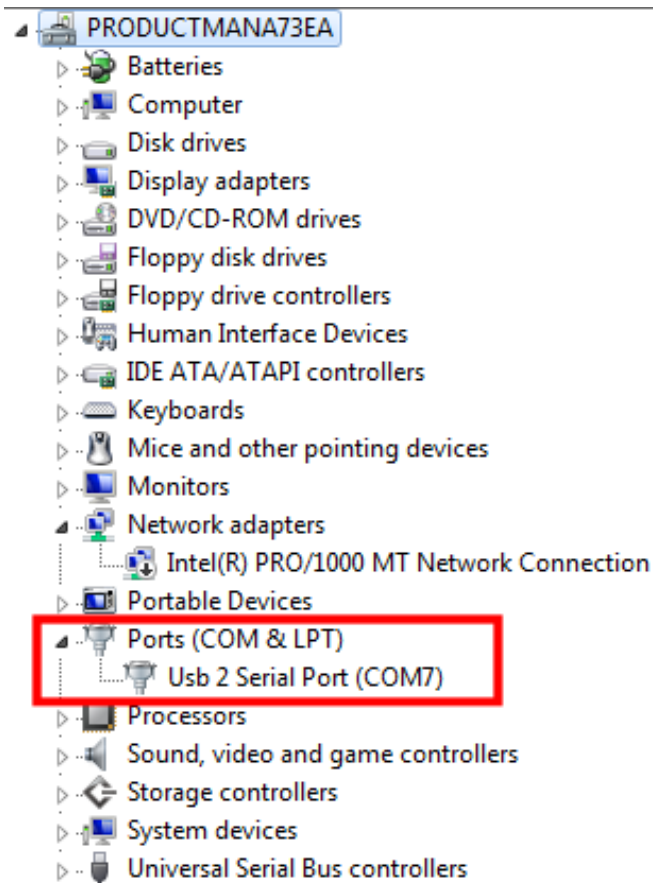


2. Change the desired levels via the up/down arrows next to each value, and click on the “Write” button. A “Write-Success” window will briefly pop up to confirm the values have been correctly written to the Gateway.
3. Adjusting the “Receive Input Gain from Radio” will increase/decrease the audio level heard at the Handset Speaker when the radio is receiving. When this parameter is changed, it will take effect on the NEXT receive.
i.e. The Receive signal must disappear, and COR must be deactivated. When COR or Receive audio re-appear, then the new value will be used.
4. Adjusting the “Transmit Output Gain to Radio” will increase/decrease the transmitted audio level from the Handset Microphone. When this parameter is changed it will take effect immediately.
5. Adjusting the “Talk Around Output Gain to Other X10DRs” will increase/decrease the Talk-around audio level out of the Gateway, and the level between multi-paired Handsets (if “Multi-Operational Mics” is active in the Gateway). When this parameter is changed it will take effect immediately.
6. The updated parameters are permanently saved in the Gateways non-volatile memory. Reading the Gateway with the “X10DR Programmer” will read the last updated values.
7. Click on “Exit” to close the program.

3. TROUBLESHOOTING:

COM PORT NOT SHOWING UP

If the COM port does not show up, check Windows “Device Manager” to see if it has been correctly recognized by the Windows Operating System, and there are no port conflicts.



- a) If the COM Port shows up in Device-Manager, but not in the Adjustment Software, then try closing and re-starting The “X10DR Gateway Audio Level Adjustment software.
- b) If the COM port does not show up in Device-Manger, then try shutting down the PC and restarting,
...or try re-installing the Application again, ensuring the Driver Software loads correctly.
...or try running the Installation program with Administrator privileges (Right-Click on the installation ...EXE file and select “Run as Administrator”)
- c) Check that the Gateway is powered up and has a connection with its paired Handset. The LED on the front of the GATEWAY should be a steady BLUE. (The Gateway should NOT be in Programming-Mode (RED LED))
- d) Check that the Gateway FIRMWARE is at least V1.83_C.
All Gateway firmware after this supports the active serial port function.

AUDIO LEVEL BEWTEEN HANDSETS IS LOW

System levels were adjusted in GW/HS Firmware V2.11/V2.01.

When mixing older and newer X10DRs in same network, you may notice a difference in Talk-Around Audio levels. The newer X10DRs require an extra 12dB boost on the Talk-Around Gain parameter to sound the same as the older X10DRs.